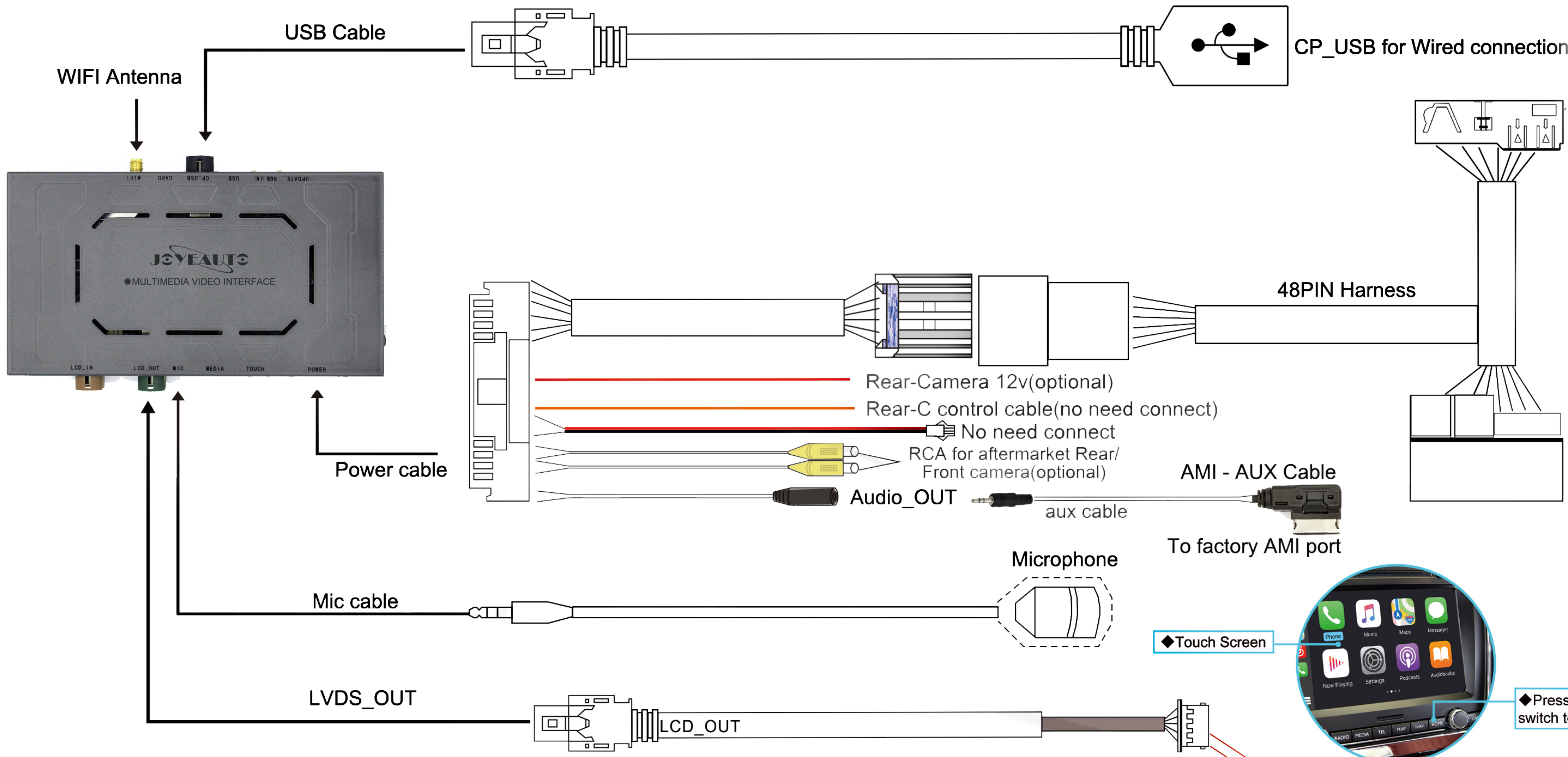
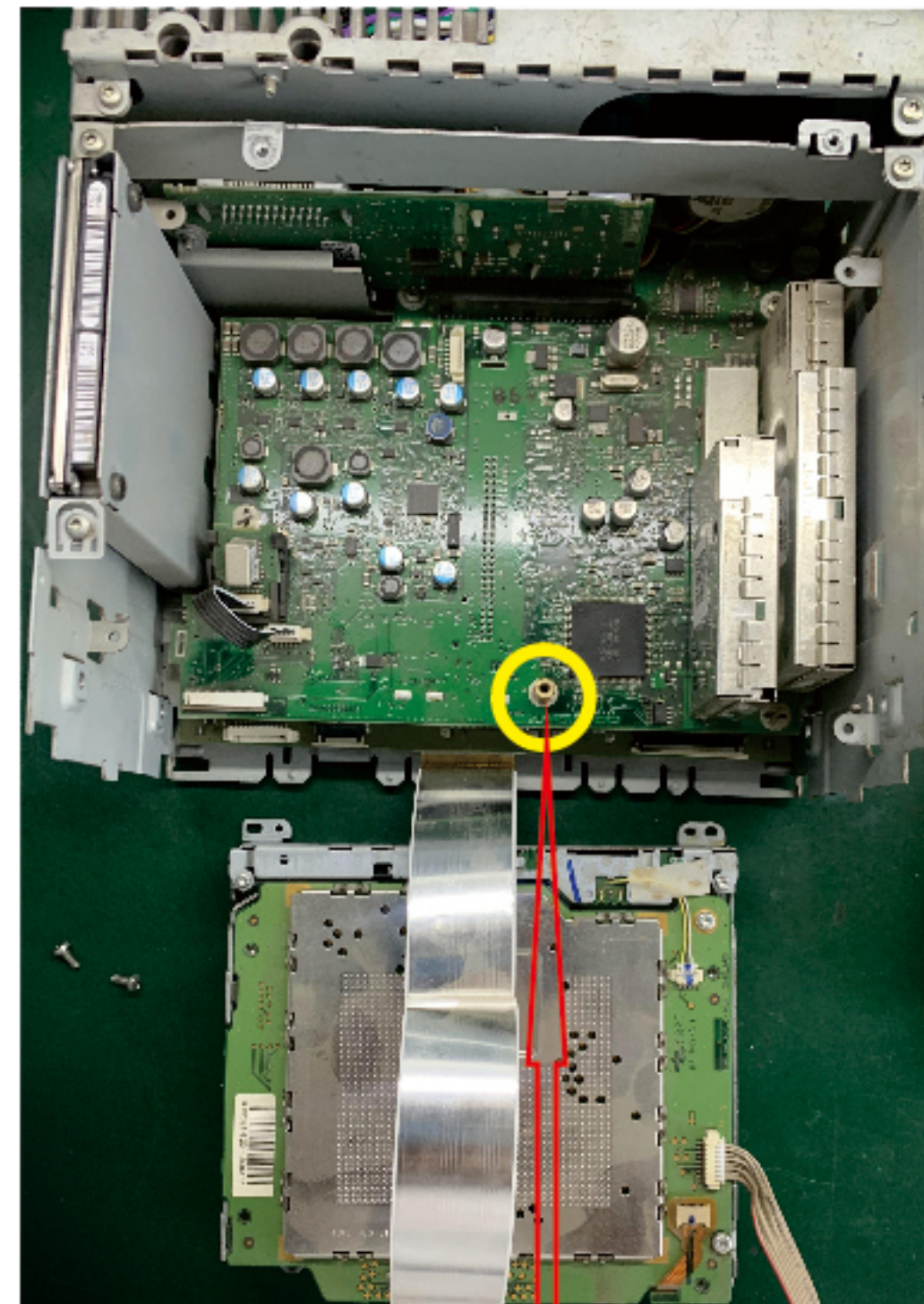
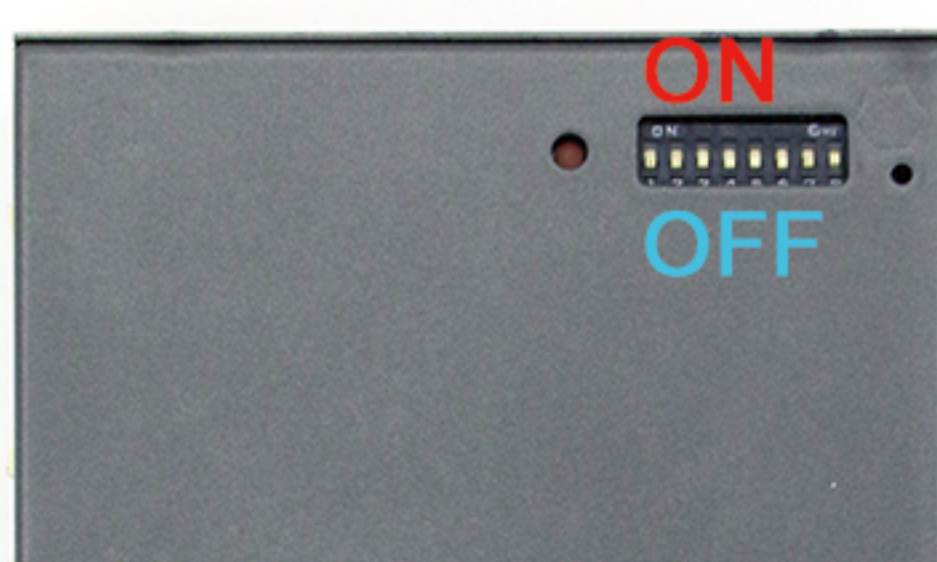


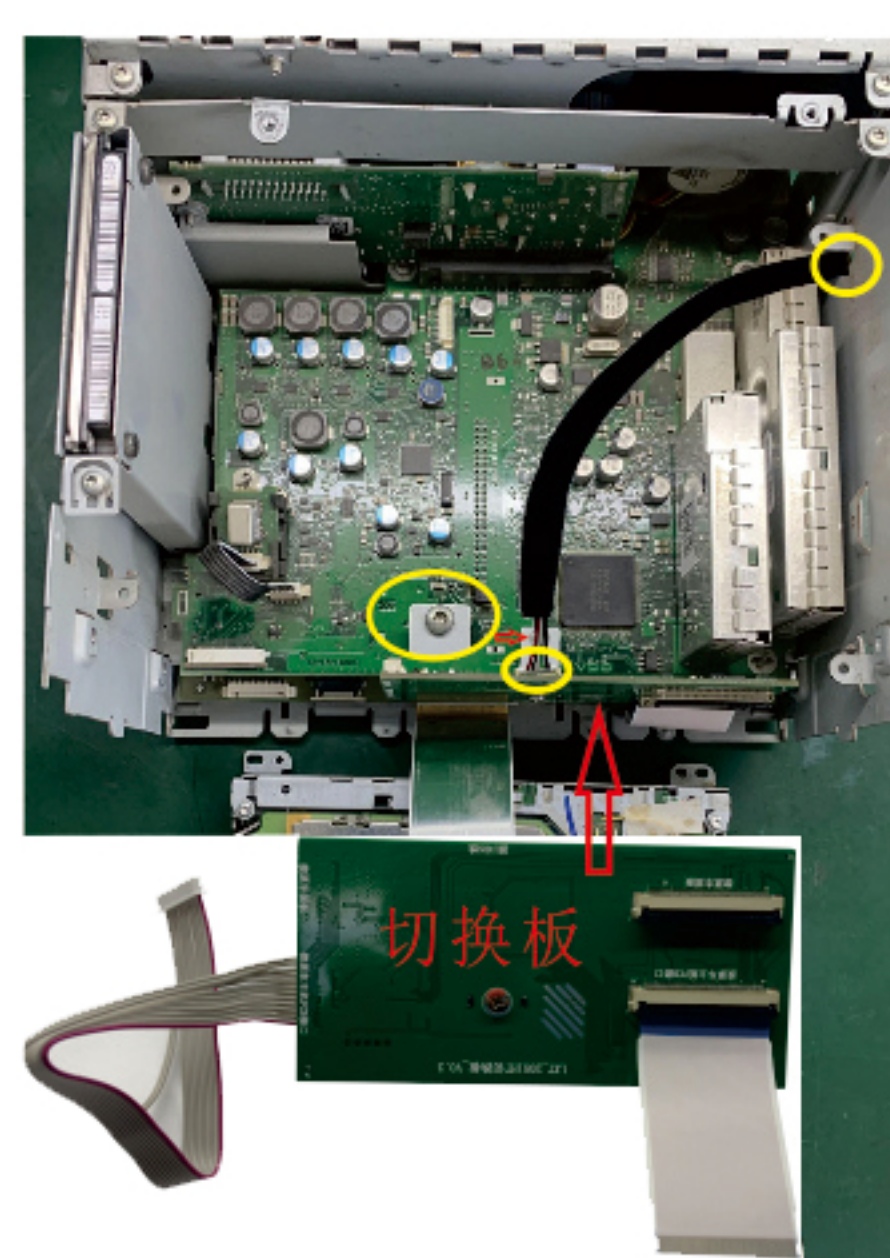
Bentley Wireless CarPlay Installation Diagram



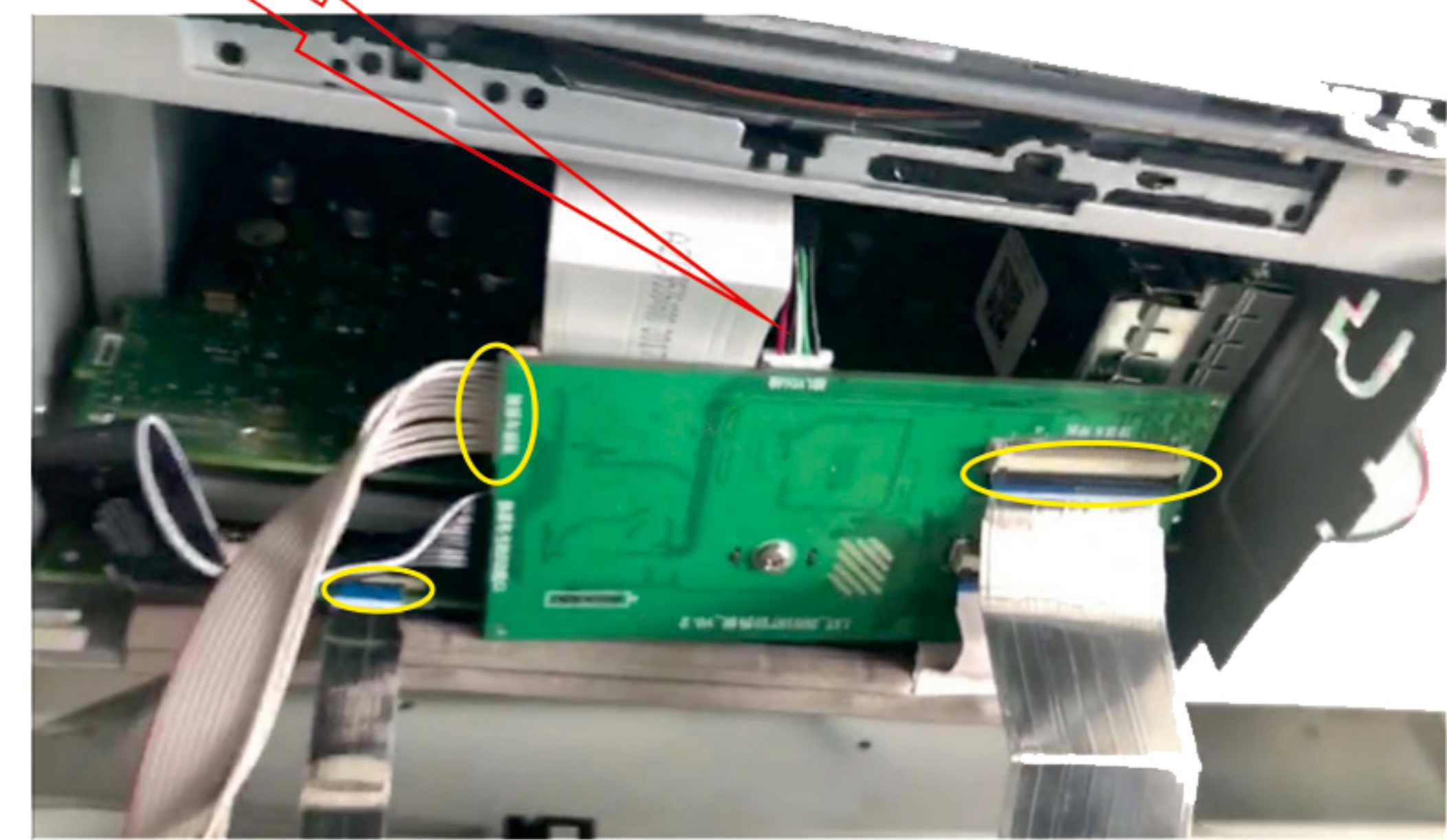
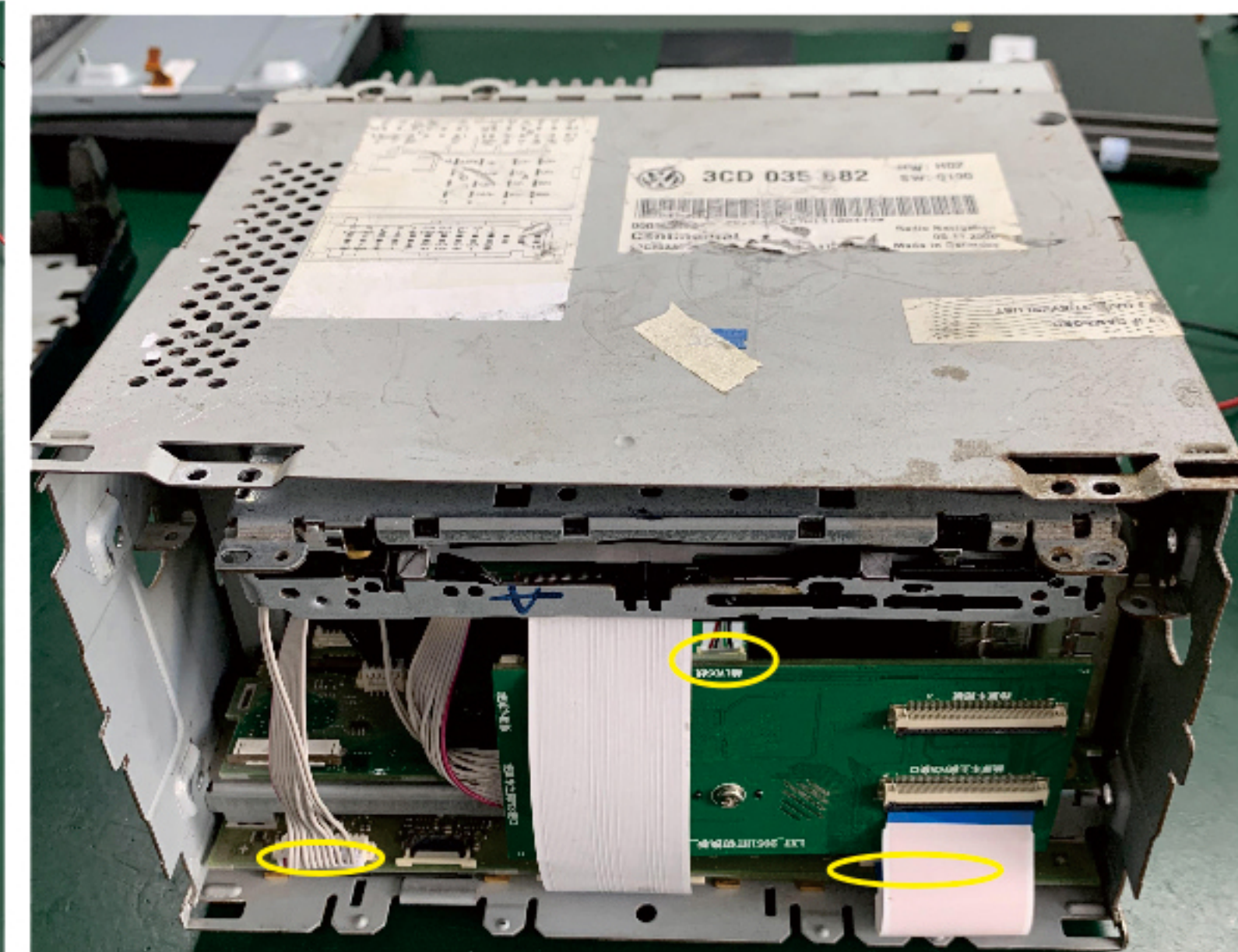
Dip Switch	Status	Description
2	ON	Touch Screen Callibration
	OFF	Off After Callibration
3	ON	For Bentley
	OFF	No Function
4	ON	Reverse Guideline OFF
	OFF	Reverse Guideline ON
8	ON	Original Rear Camera
	OFF	Aftermarket Rear Camera
1, 5, 7 All Set OFF, no function		



1:Separate car panel and headunit, then unscrew core screws then unscrew the highlighted screw to add PCB



2:Take out PCB from package and install it in the slot, secure with a screw. Insert 50P FFC and 12P wiring into factory slots. Plug LVDS wire and pay attention to headunit entry location. Make sure all wiring are flat to avoid circuit shorting. Restore panel. Result is the picture on the right.



3:Finally restore three factory wires. 50P FFC and 12P wiring into new PCB and SD card wire. Restore panel and screws.